



孕龍科技股份有限公司
Zeroplus Technology Co., Ltd.

SPECIFICATION

MODEL: B09014-LAP- Compact Flash 4.1-M

PART NO: _____

VERSION: V1.00

Approver		Check	Design
GM	PM		

Customer Confirm

* Please fax the file to
ZeroPlus Technology after
signing .

2F, NO.123, Jian Ba Rd,
Chung Ho City, Taipei Hsian, R.O.C.

Tel:+886-2-66202225
Fax:+886-2-22234362



Content

1	Software Download.....	3
2	Software Installation	6
3	Software Register	10
4	User Interface	13
5	Operating Instructions.....	17



1 Software Download

Please download the software as the following steps:

※ Remark: We won't have additional notice for you, when there is any modification of the module specification. If there is some unconformity caused by the module version upgrade, users should take the module software as the standard.

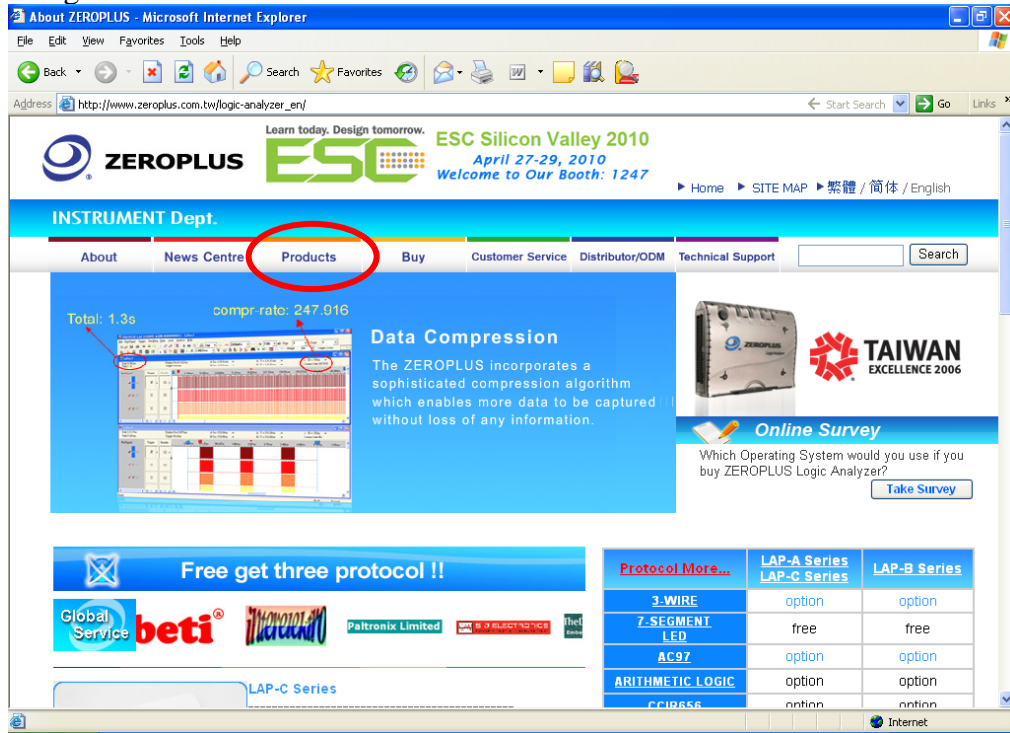
STEP 1. Visit the website of ZeroPlus: <http://www.zeroplus.com.tw>.

STEP 2. Click the **English** in the Instrument Division part on the Homepage.

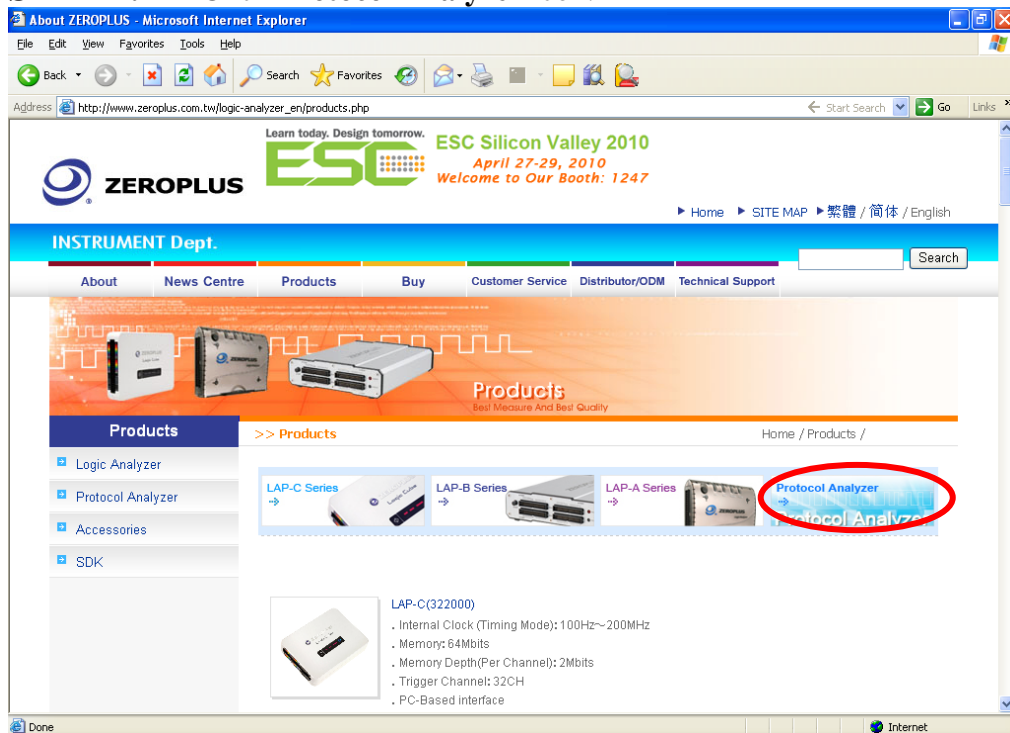




STEP 3. Click **Products** menu or select **Protocol Analyzer** item from its pull-down menu to go straight to STEP 5.

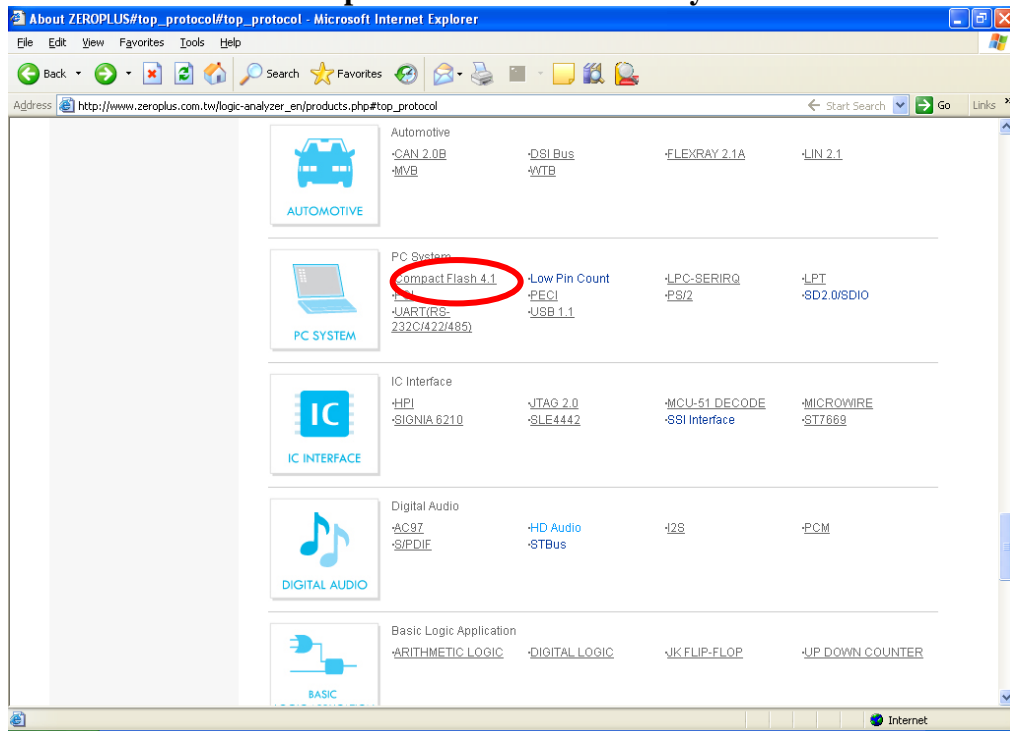


STEP 4. Click **Protocol Analyzer** icon.

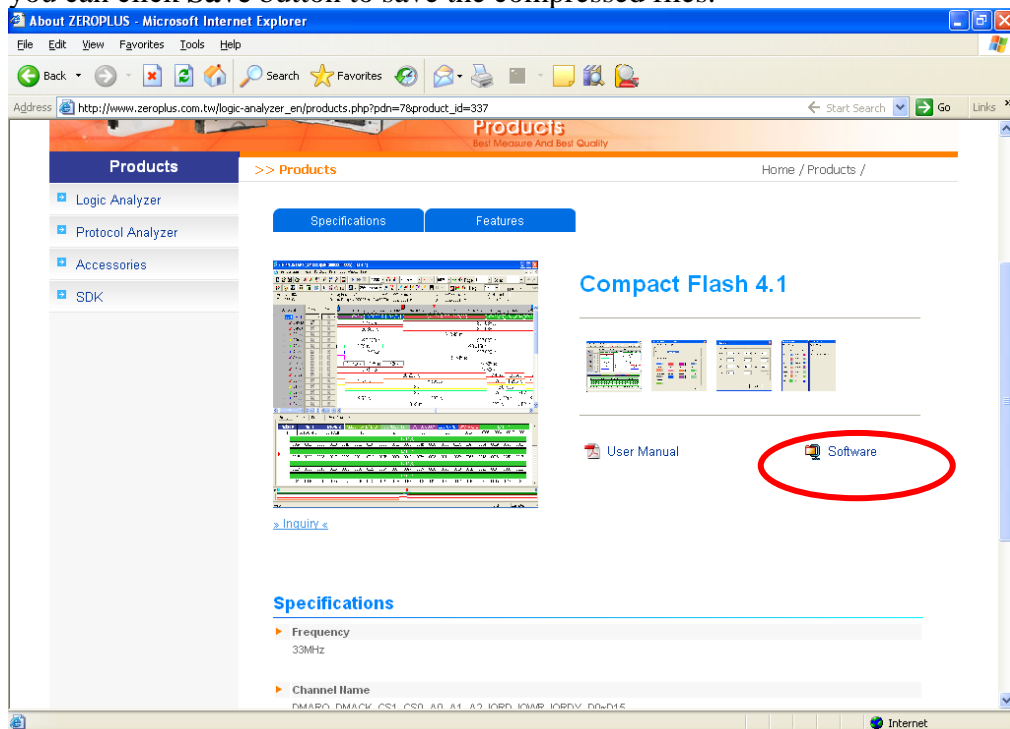




STEP 5. Click **Compact Flash 4.1** in the **PC System** column.



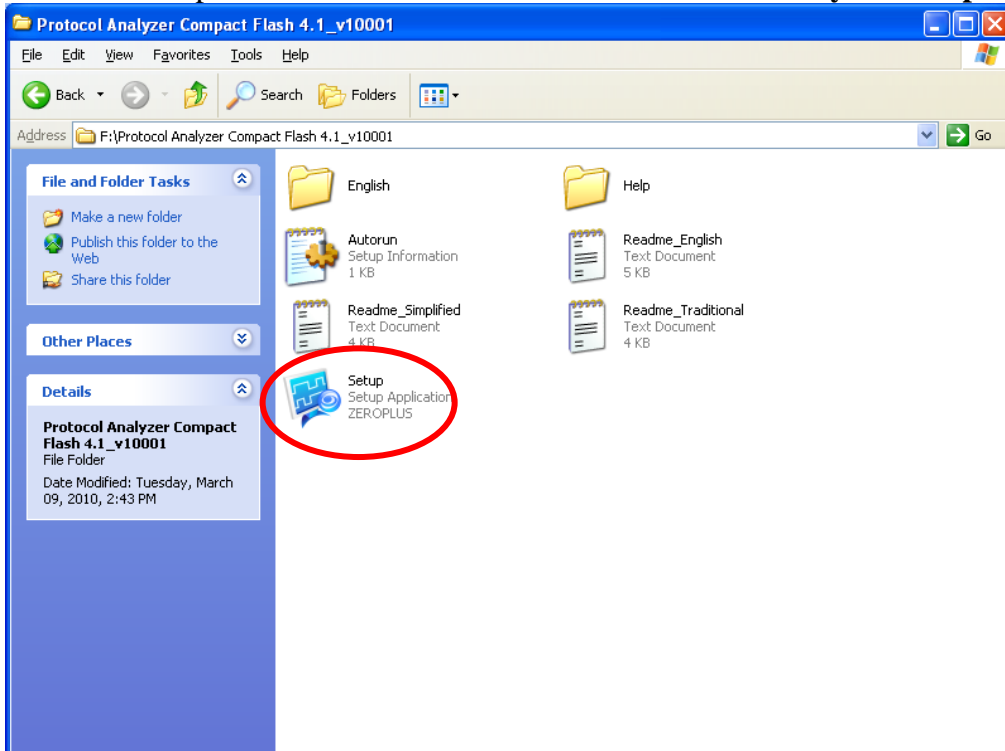
STEP 6. Click **Software** in the Products page. When the File Download dialog box appears, you can click **Save** button to save the compressed files.



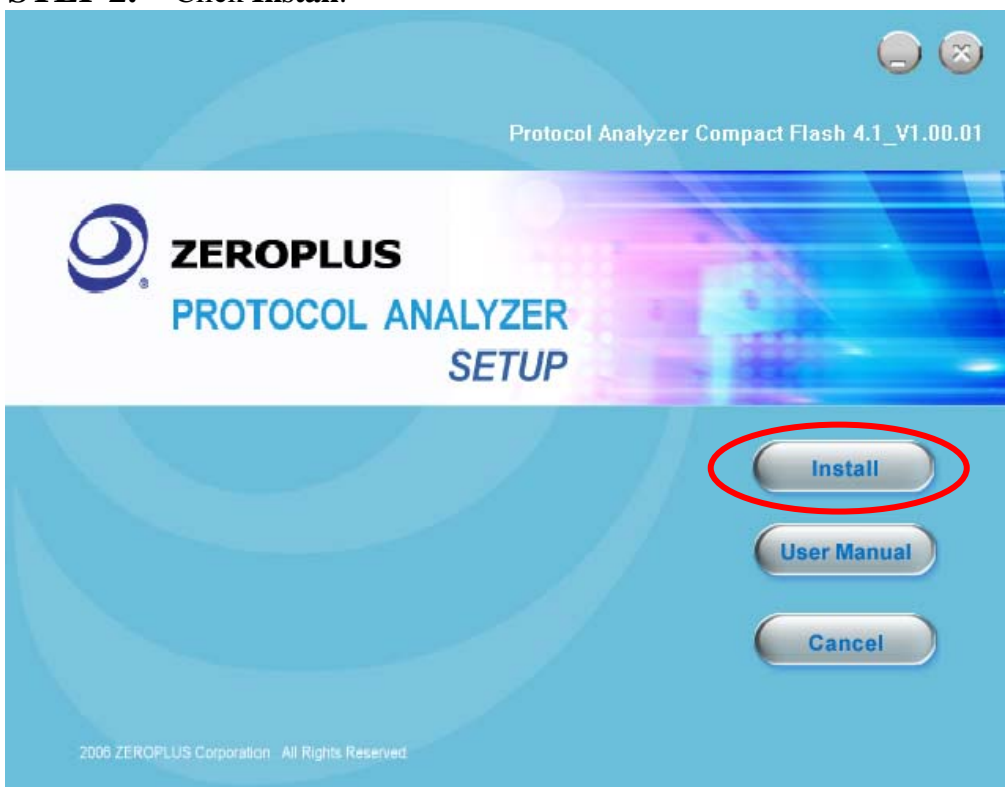


2 Software Installation

STEP 1. Open the downloaded files to install **Protocol Analyzer Compact Flash 4.1.**

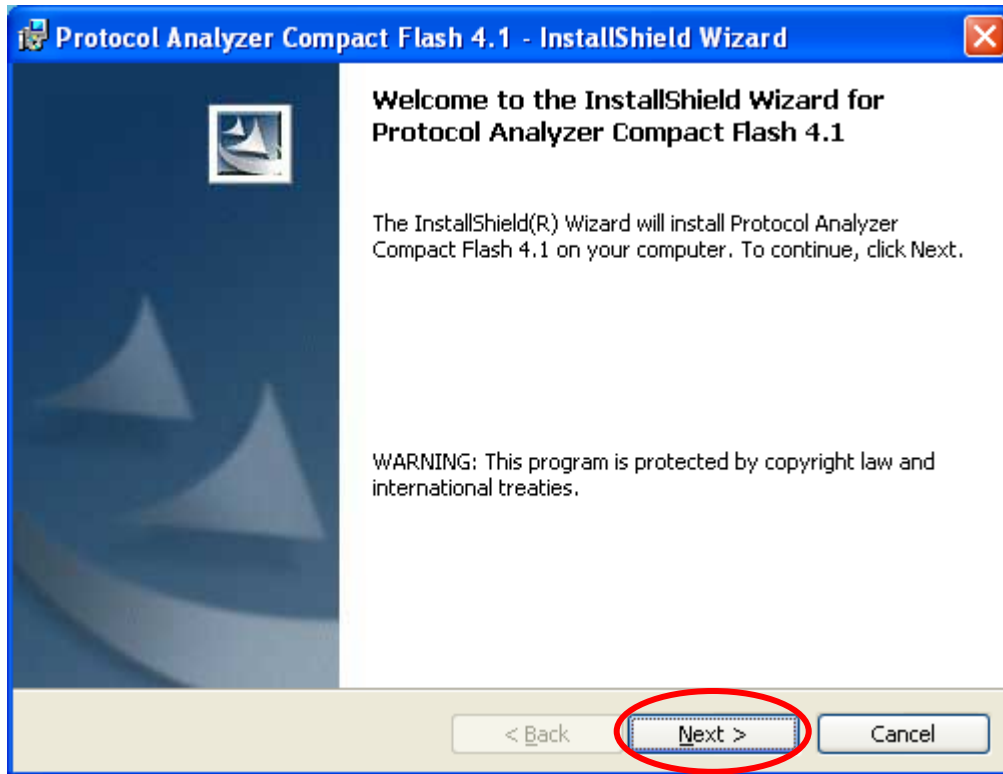


STEP 2. Click **Install**.

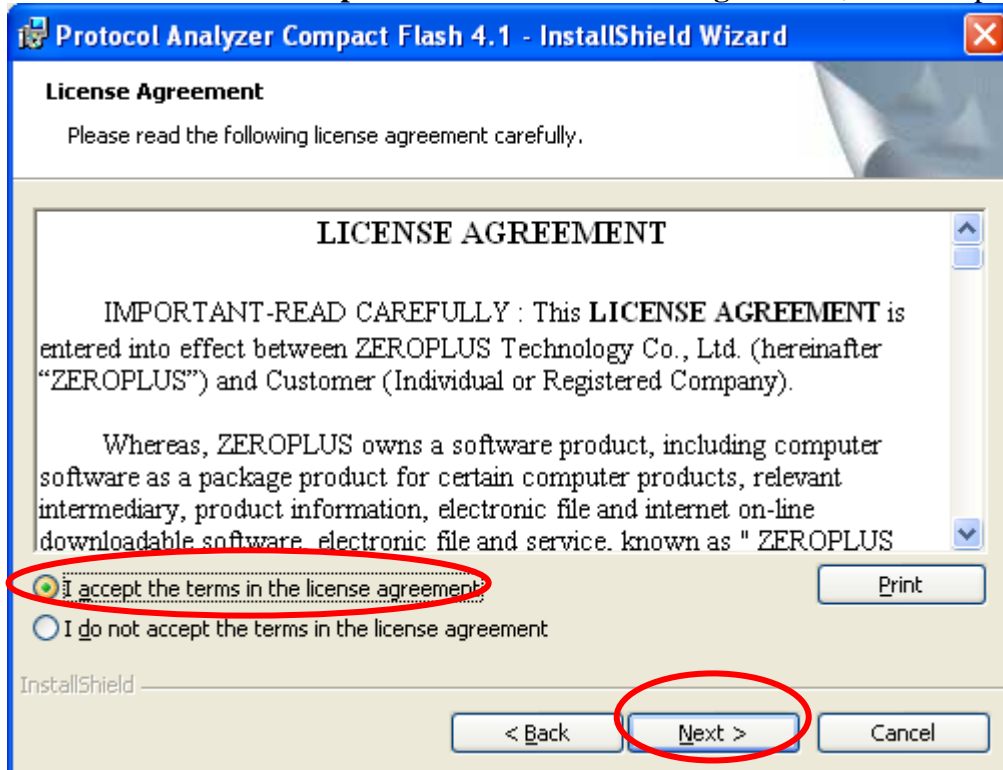




STEP 3. Click Next.

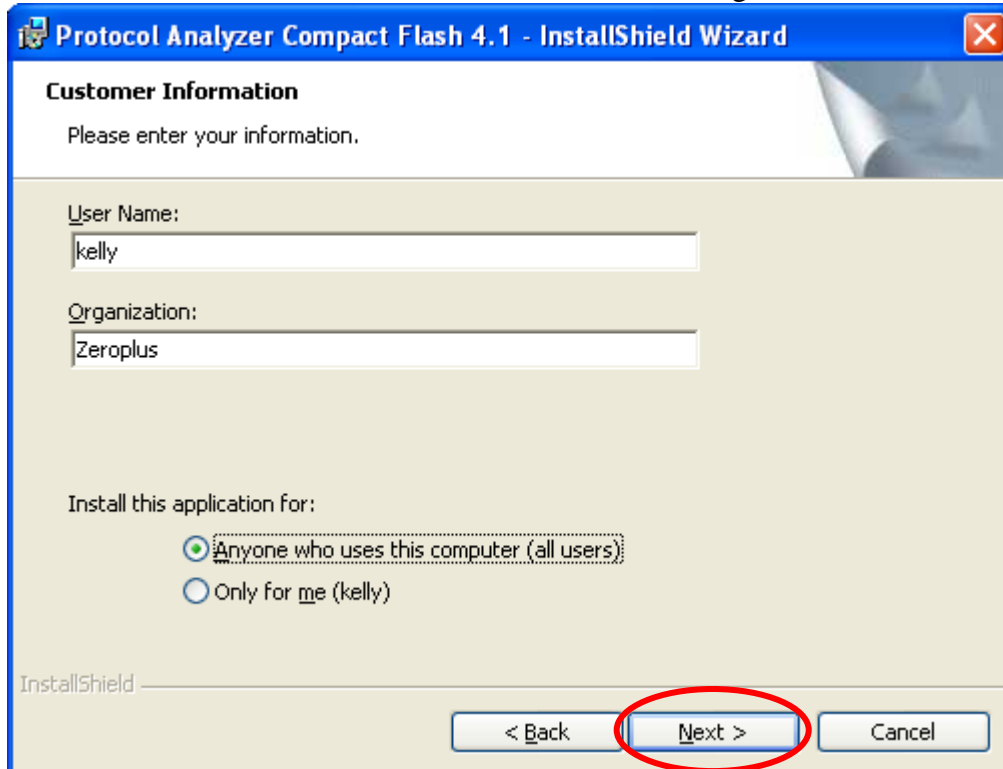


STEP 4. Select I accept the terms in the license agreement, and then press Next.

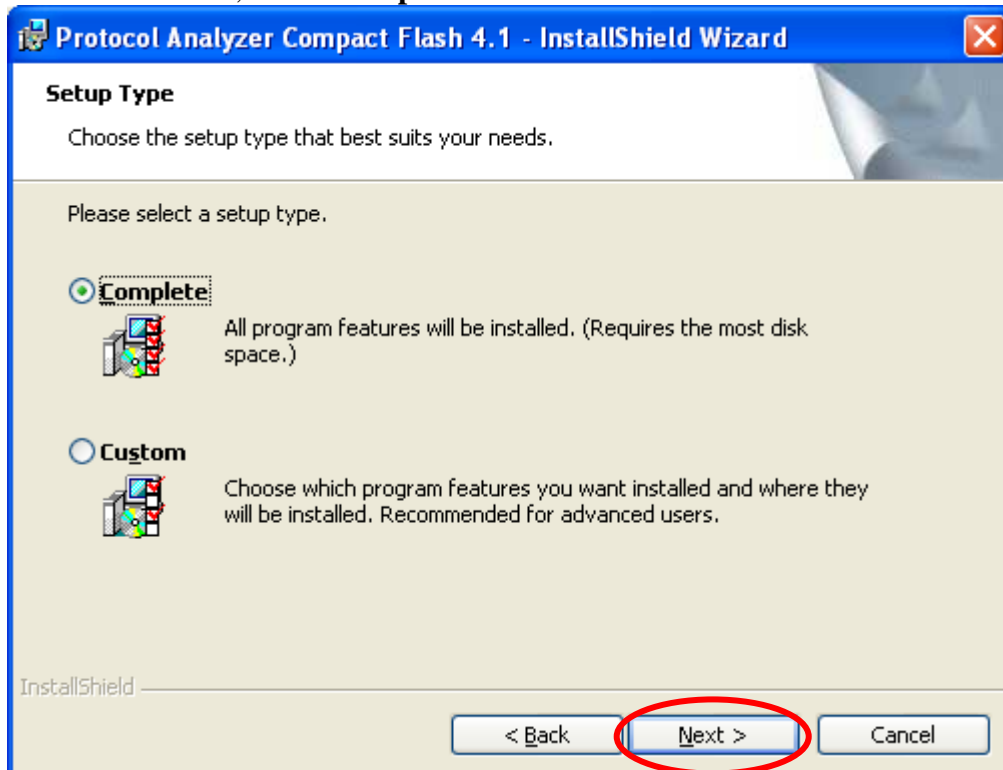




STEP 5. Fill in users' information in the below dialog box and click **Next**.

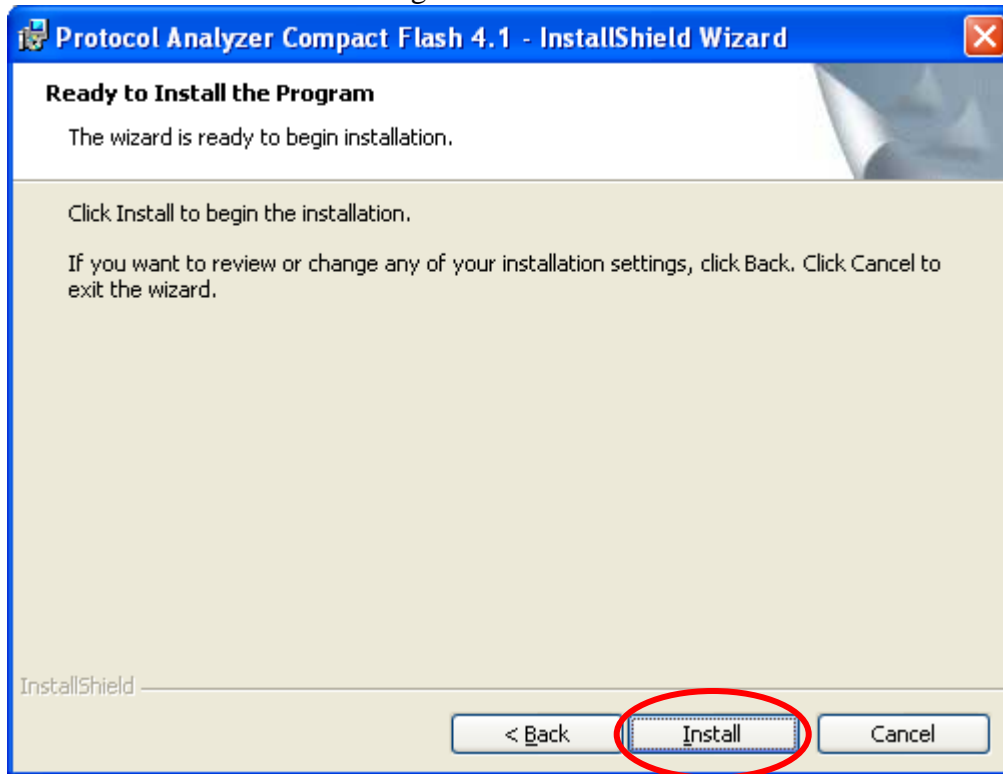


STEP 6. First, select **Complete** and then click **Next**.

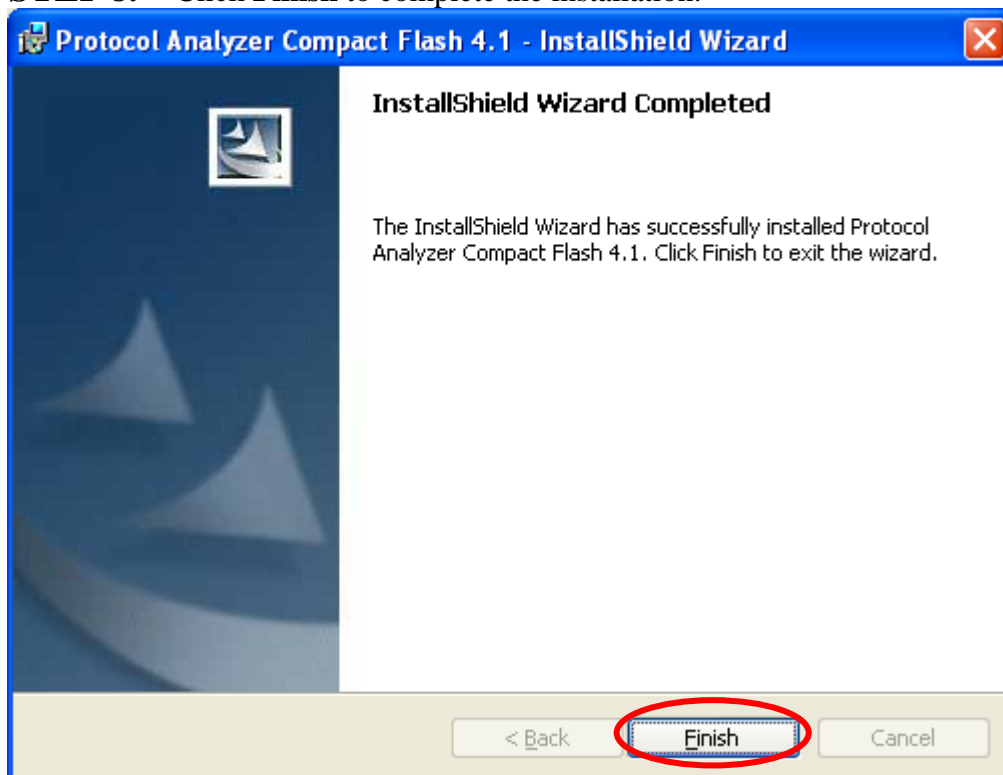




STEP 7. Click **Install** to begin the installation.



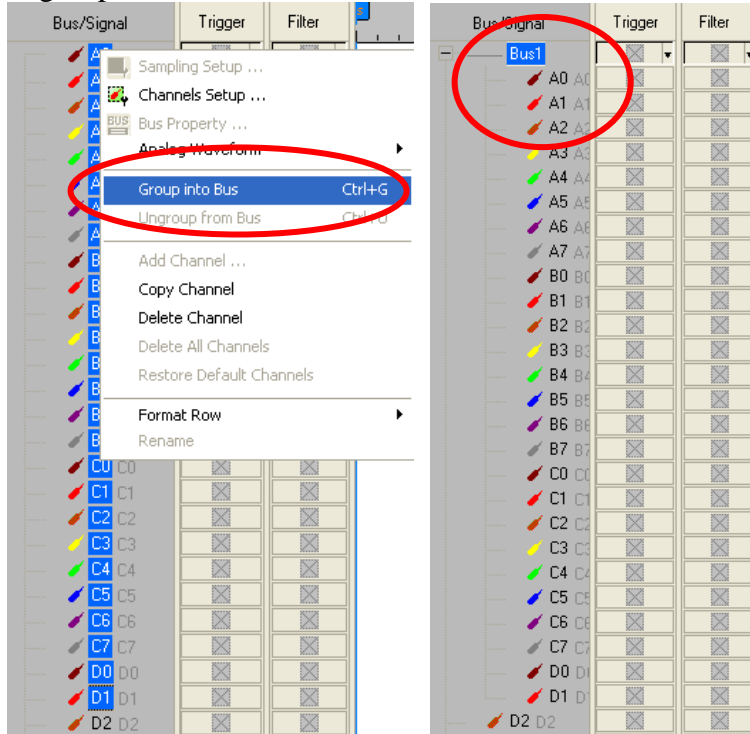
STEP 8. Click **Finish** to complete the installation.



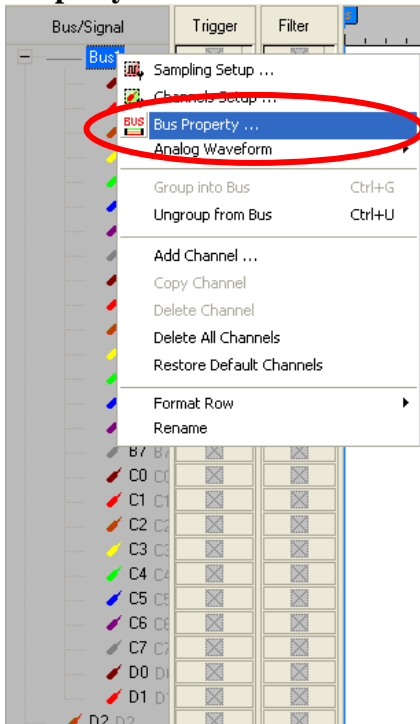


3 Software Register

STEP 1. Open the Logic Analyzer and group the unanalyzed channels into **Bus1** by pressing the **Right Key** on the mouse. Compact Flash 4.1 needs 26 channels to decode signals, so it is necessary to group 26 channels into a Bus.

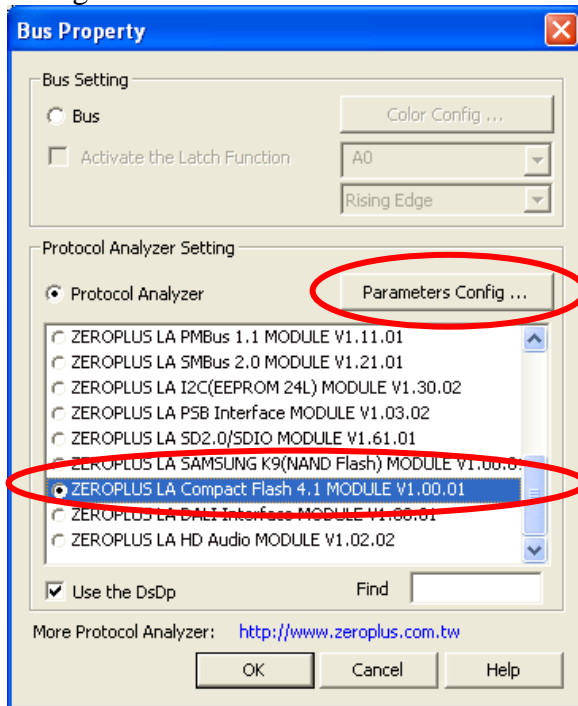


STEP 2. Select **Bus1**, then press **Right Key** on the mouse to list the menu, next press **Bus Property** or **Bus** icon on the toolbar to open **Bus Property** dialog box.

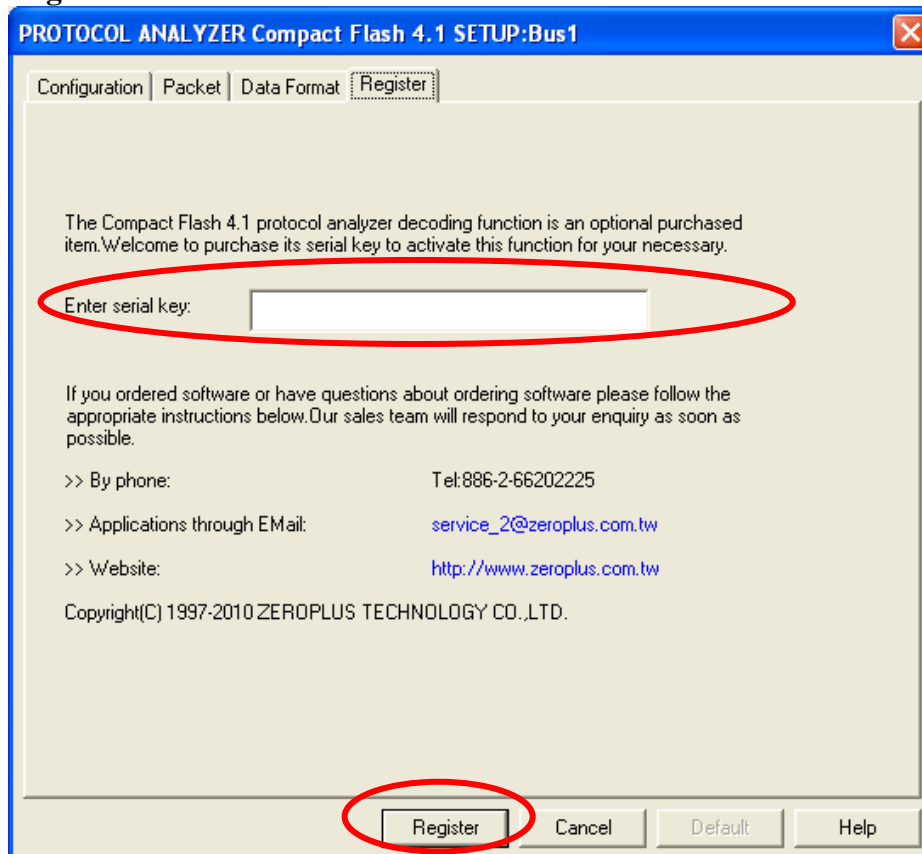




STEP 3. For Protocol Analyzer Compact Flash 4.1 Parameters Configuration, select Protocol Analyzer, and then choose **ZEROPLUS LA Compact Flash 4.1 MODULE V1.00.01**. Next click **Parameters Configuration** to open the **PROTOCOL ANALYZER Compact Flash 4.1 SETUP** dialog box.

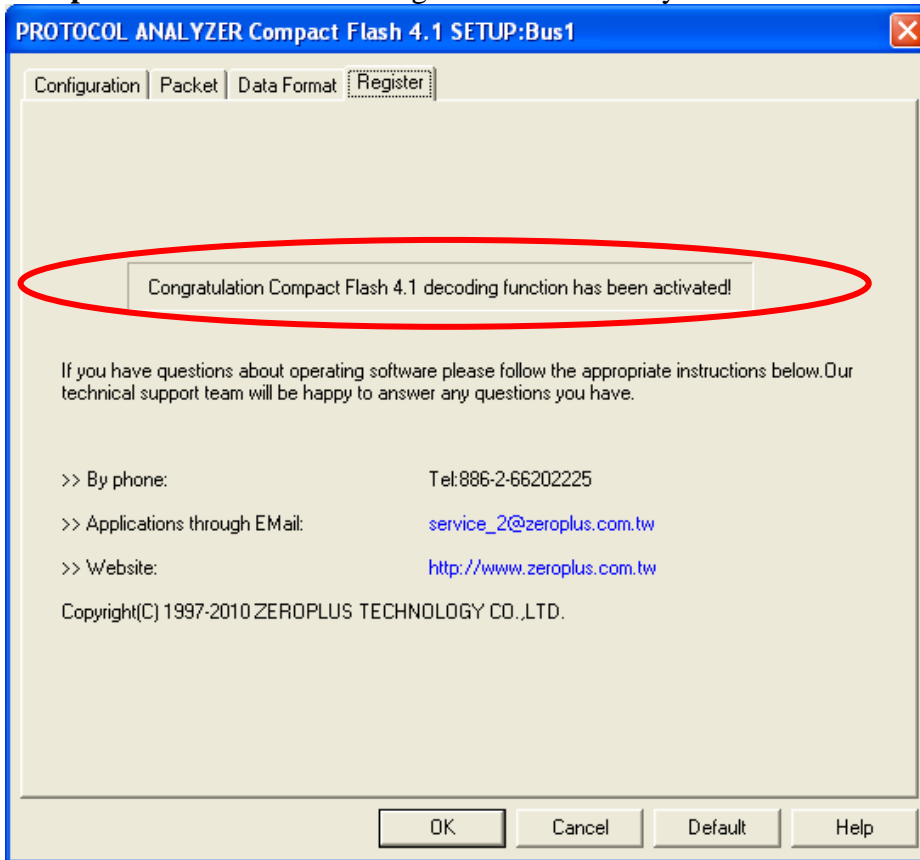


STEP 4. Press Register tab to type the serial key number of **Compact Flash 4.1**. Then, press **Register**.





STEP 5. After pressing the Register button, following dialog box will appear; it denotes that the **Compact Flash 4.1** has been registered successfully.

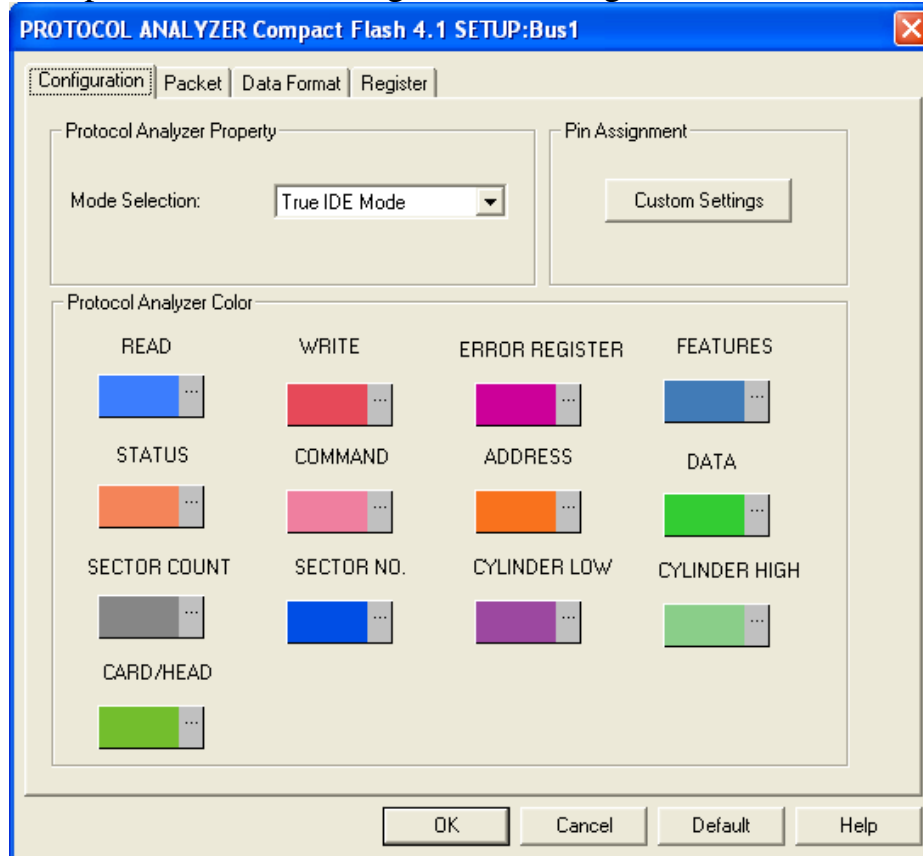




4 User Interface

In the configuration, please refer to the below images to select options of setting Compact Flash 4.1 module.

Compact Flash 4.1 Configuration Dialog Box



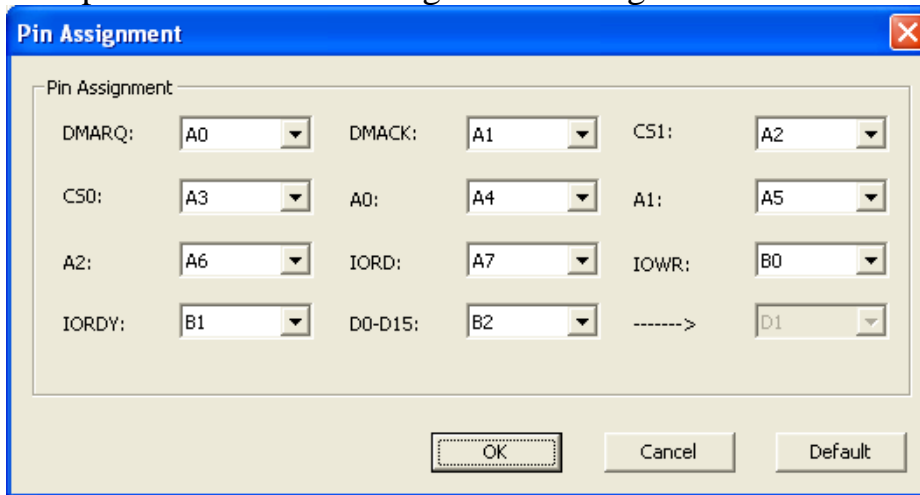
Protocol Analyzer Property: At present, there is only one option, True IDE Mode, for users to select in the Mode Selection.

Protocol Analyzer Color: The Protocol Analyzer Color can be varied by users.

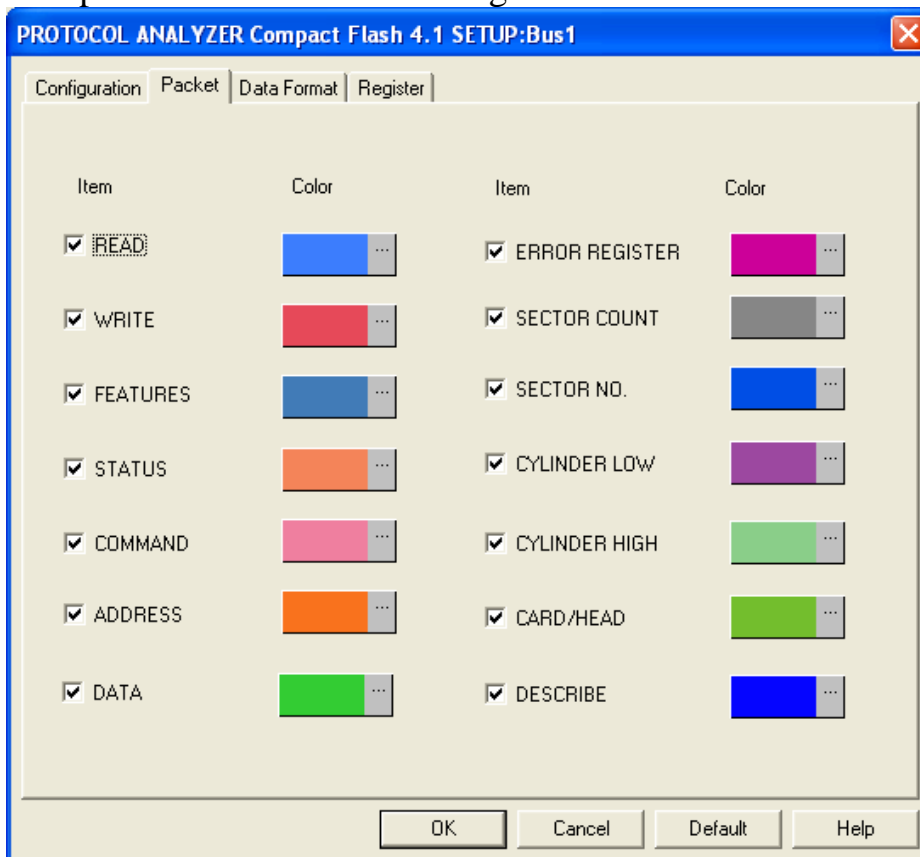
Pin Assignment: Click the “Custom Settings” to enter the Pin Assignment dialog box. It needs 26 channels to decode the signal of the True IDE Mode, so users should select the Logic Analyzer with 32 channels or more to capture the signal, and the Logic Analyzer with 16 channels cannot be used. Users can only set the D0 channel for D0-D15 in the following interface, and the next 15 channels can be set automatically following the set D0 channel.



Compact Flash 4.1 Pin Assignment Dialog Box



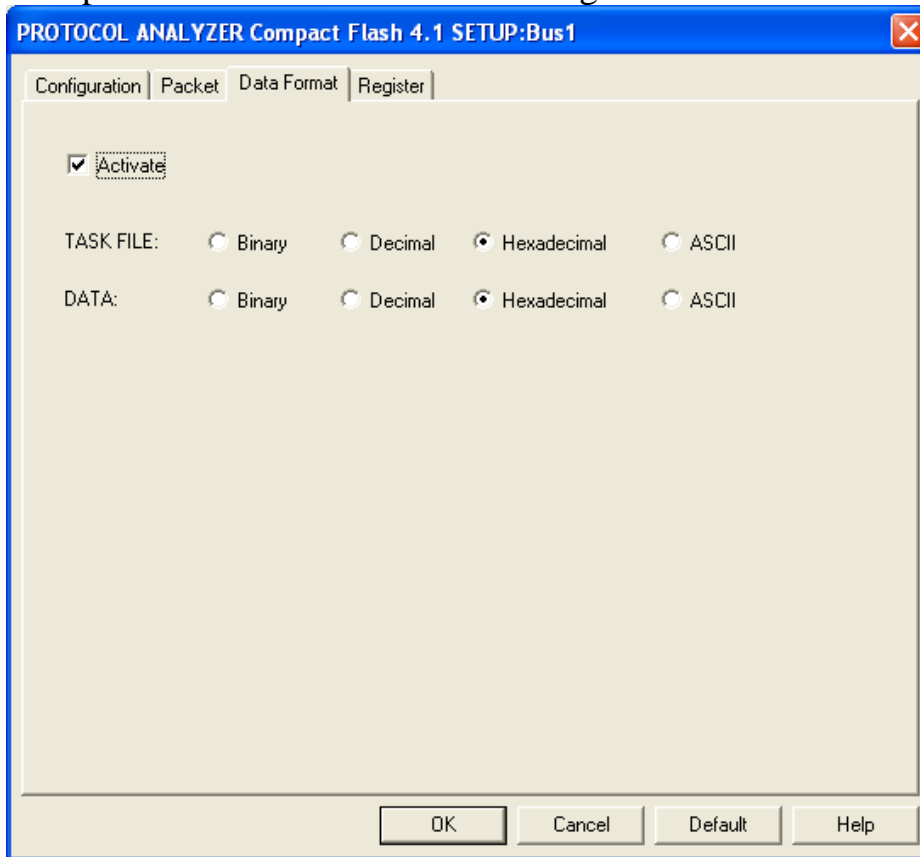
Compact Flash 4.1 Packet Dialog Box



In the packet part, users can set the items and colors as users' requirements.



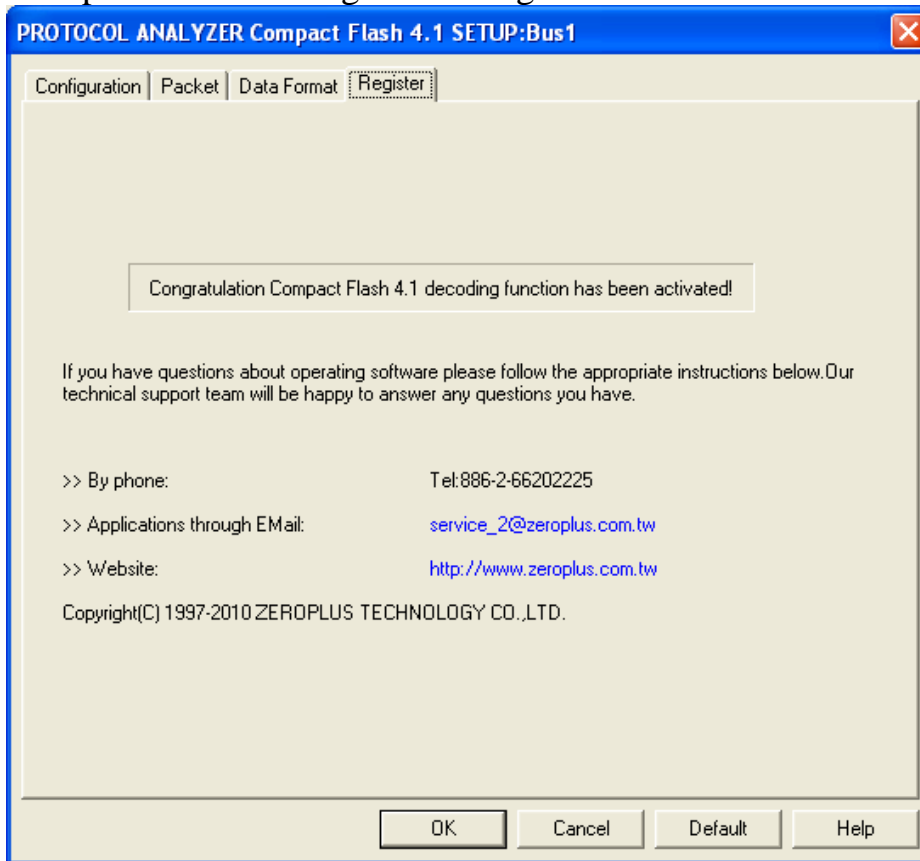
Compact Flash 4.1 Data Format Dialog Box



Users can set the Data Format of the TASK FILE and DATA as their requirements. When selecting the option, Activate, the data formats are decided by the settings in the Protocol Analyzer; when not selecting the option, Activate, the data formats are decided by the settings in the main program.



Compact Flash 4.1 Register Dialog Box

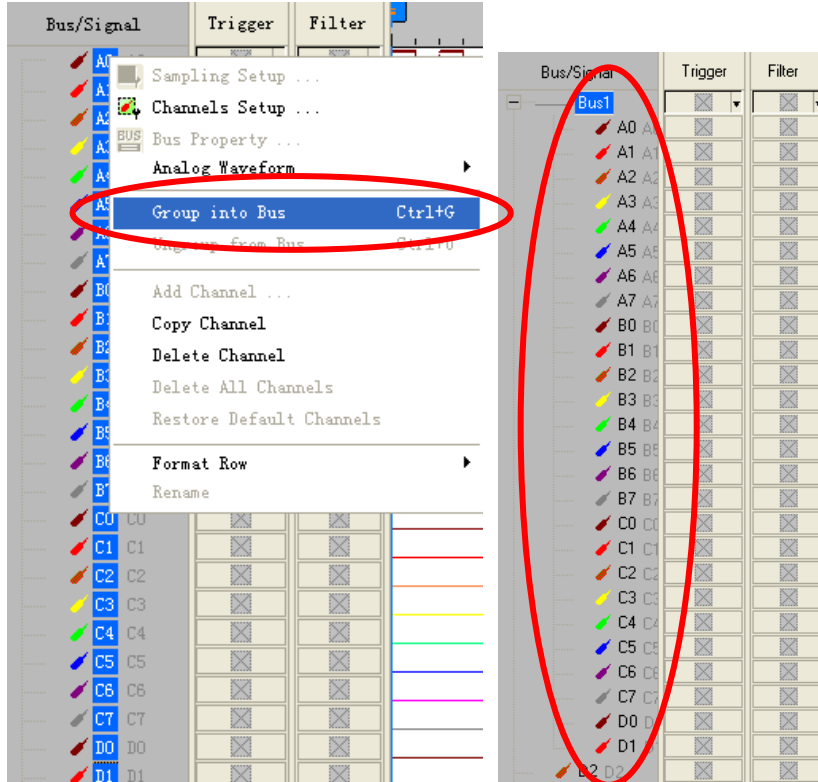


There is written ZeroPlus company information. If you have any questions about software operations, you can contact ZeroPlus by Telephone or Email.

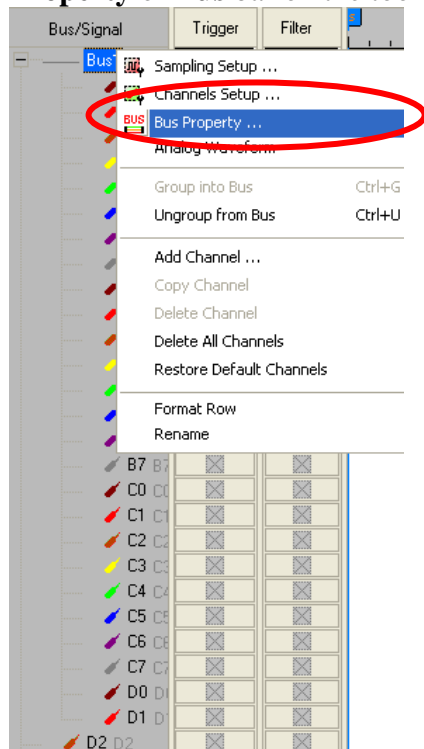


5 Operating Instructions

STEP 1. Group the unanalyzed channels into **Bus1** by pressing the **Right Key** on the mouse. Compact Flash 4.1 needs 26 channels to decode signals, so it is necessary to group 26 channels into a Bus.

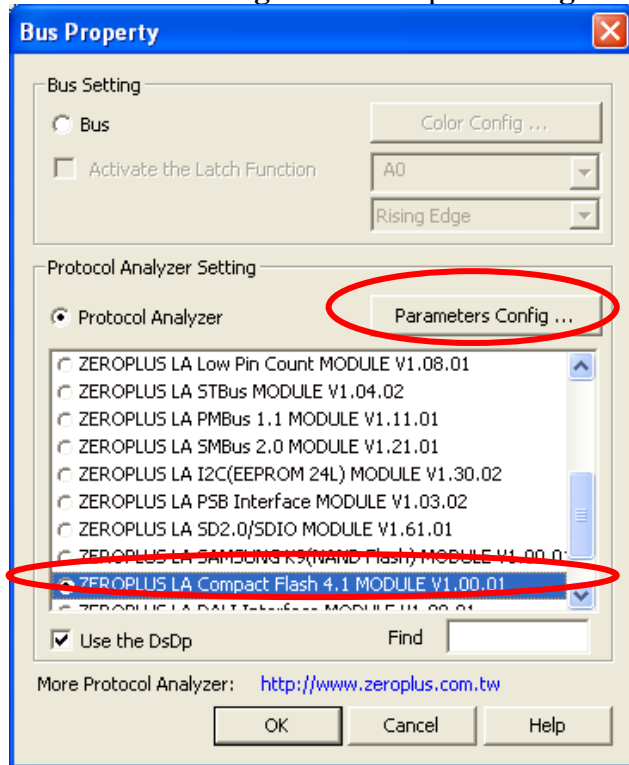


STEP 2. Select **Bus1**, and press **Right Key** on the mouse to list the menu, next press **Bus Property** or **Bus** bar on the toolbar to open **Bus Property** dialog box.

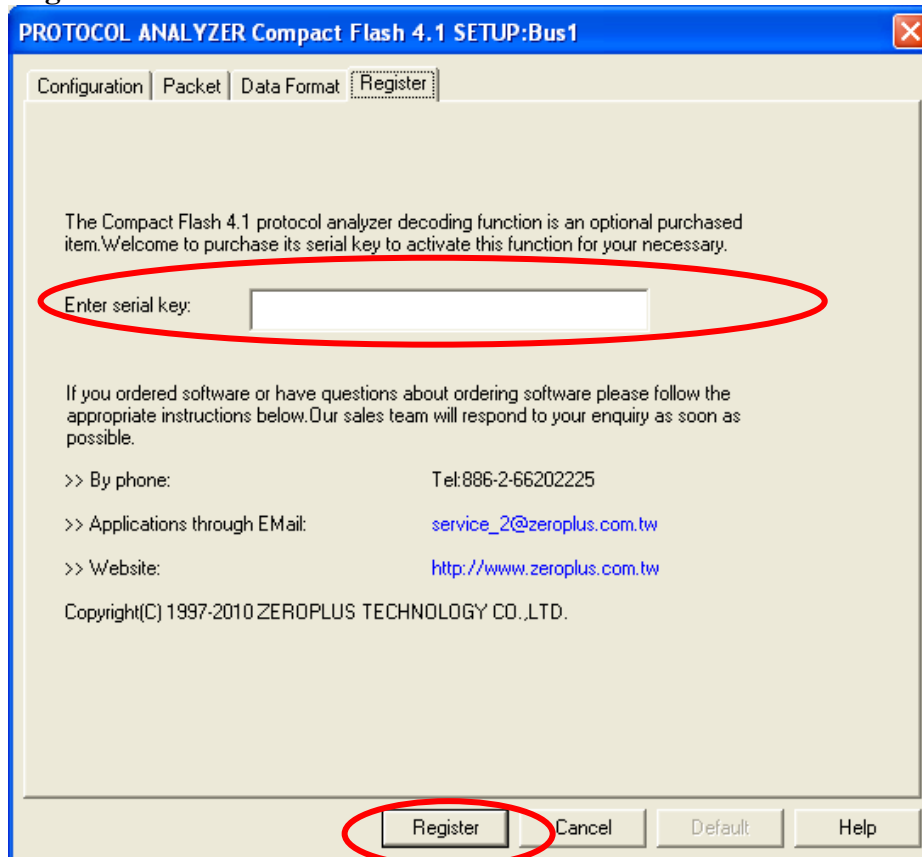




STEP 3. For Protocol Analyzer Compact Flash 4.1 Parameters Configuration, select Protocol Analyzer, and then choose **ZEROPLUS LA Compact Flash 4.1 MODULE V1.00.01**. Next click **Parameters Configuration** to open **Configuration** dialog box.

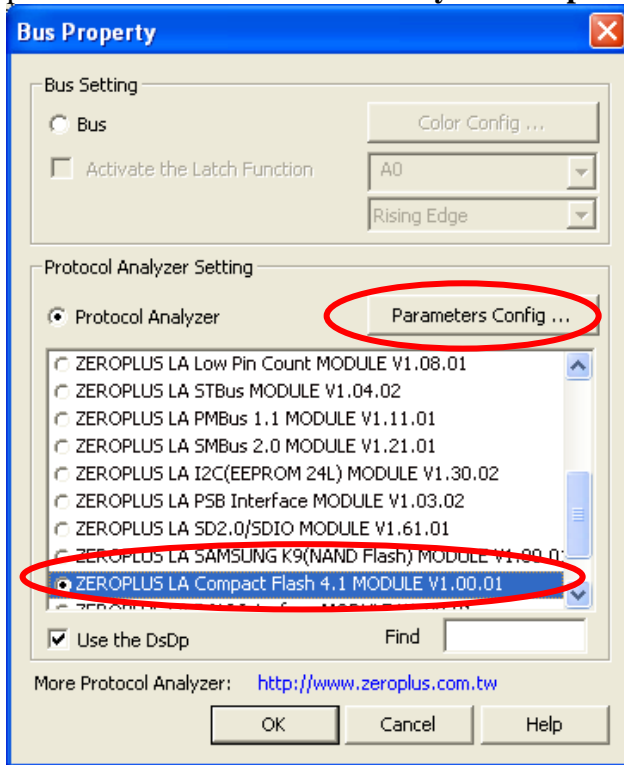


STEP 4. Press Register tab to type the serial key number of **Compact Flash 4.1**. Then, press **Register**.

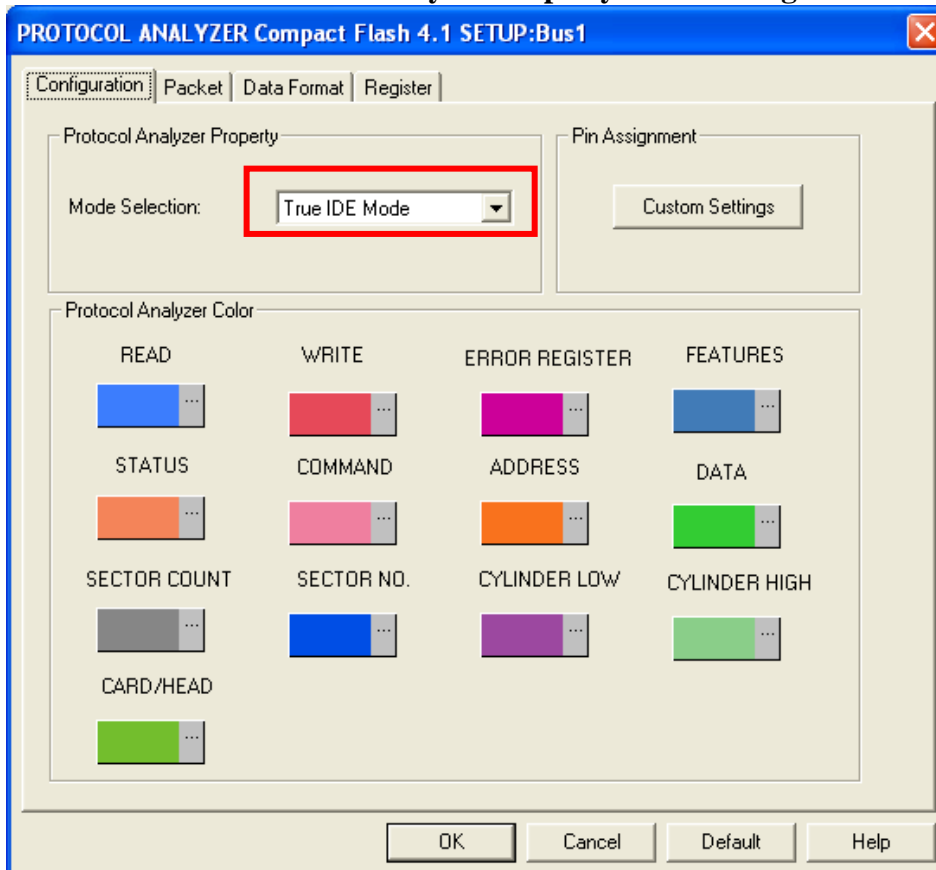




STEP 5. Click **Parameters Configuration** again, and open the Configuration dialog box to set the parameters for the **Protocol Analyzer Compact Flash 4.1**.

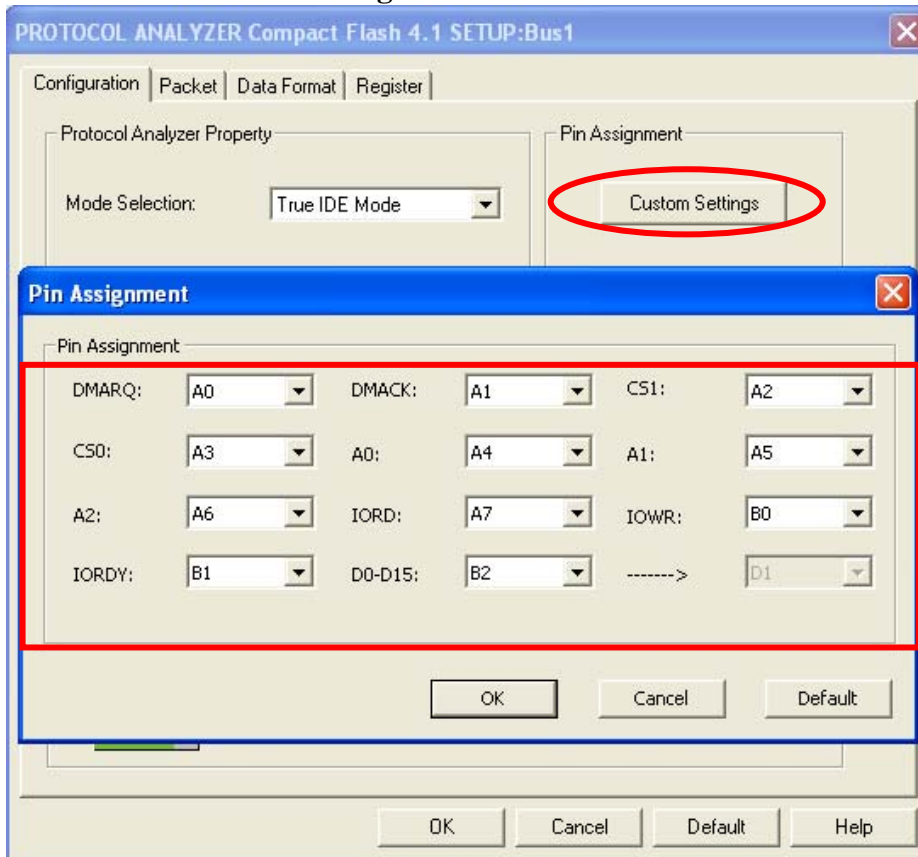


STEP 6. Set the **Protocol Analyzer Property** in the **Configuration** dialog box.

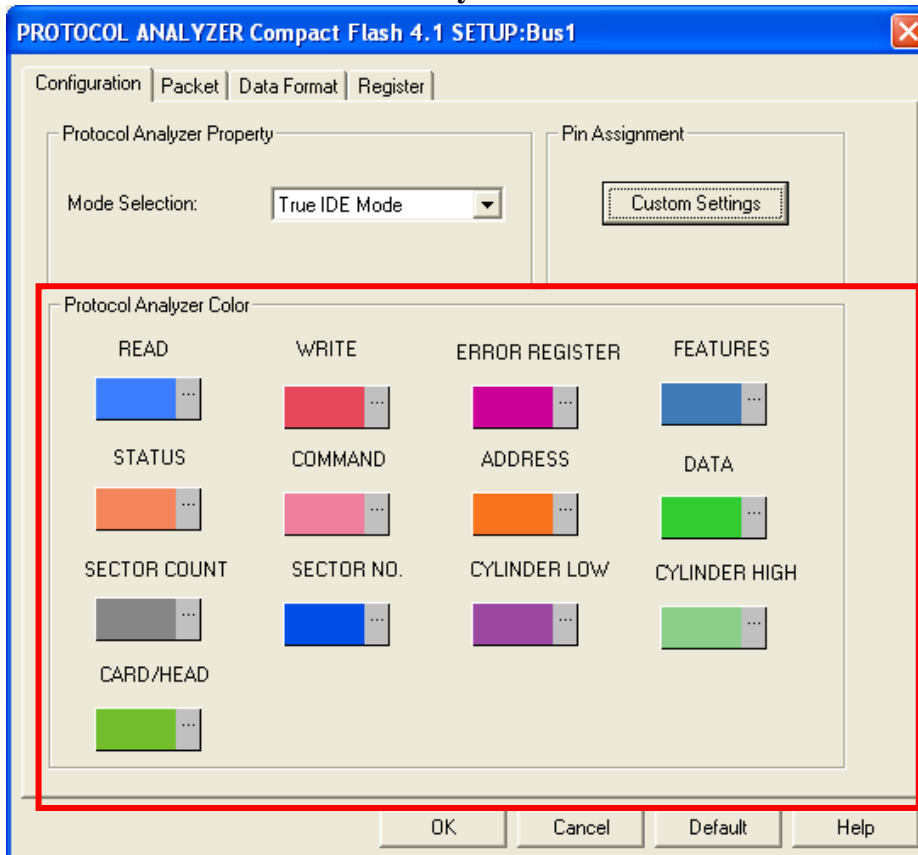




STEP 7. Set the Pin Assignment.



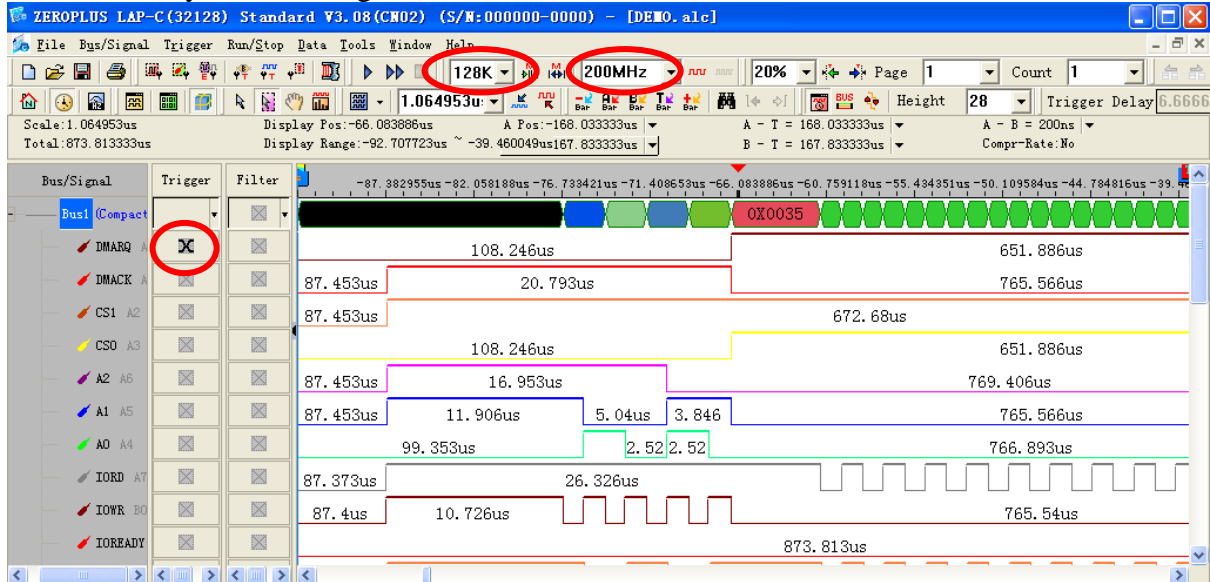
STEP 8. Set the Protocol Analyzer Color.





STEP 9. Following pictures show the completion of the protocol analyzer decoding and the packet list. The trigger condition is set as Either Edge; the memory depth is 128K; the sampling frequency is 200MHz (the sampling frequency should be more than 4 times higher than the signal to be tested).

Protocol Analyzer Decoding



Packet List

